

# HPS-METAL HALIDE

## 1200 Series

*Rustproof Vandal-Resistant Wall/Ceiling Luminaire  
150 Watts Maximum*



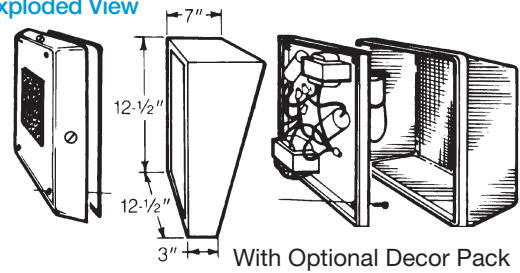
Designed for indoor/outdoor use where efficiency and style are as important as endurance to abuse by environmental elements or vandalism. Engineered with materials offering the highest resistance to rust, corrosion, and impact. The housing is totally nonconductive, insuring more safety to the end user. Smooth exterior lens allows ease of cleaning, clear prismatic interior assures optimal lumen output, rounded corners for increased impact strength and safety. Ideally suited for schools, motels, apartments, parking areas; and commercial, industrial, and government establishments.



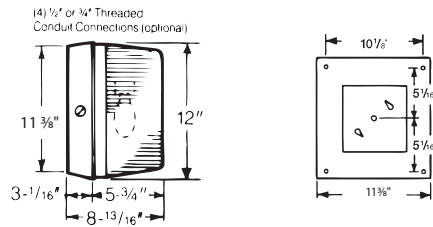
### Specifications

<b>Lens:</b>	Injection molded of UV-stabilized Clear Prismatic polycarbonate. Average thickness is 1/8". Smooth exterior surface for ease of cleaning, and rounded corners for increased impact strength and safety.
<b>Base Plate:</b>	Rustproof .080" 5052 H-32 tempered marine-grade aluminum.
<b>Housing:</b>	Injection molded of UV-stabilized reinforced bronze or white polycarbonate. Rear knockout for supply wire. Available with up to four threaded connections and plugs suitable for 1/2" conduit (specify connection positions).
<b>Gasket:</b>	Lens gasket and mounting gasket are closed-cell neoprene rubber.
<b>Socket:</b>	Medium-base high heat phenolic, 4kV pulse rated. Lamp base-up orientation required when luminaire is wall mounted.
<b>Lamp: (optional)</b>	Medium-base lamp; High Pressure Sodium lamp in 50 (ANSI S68), 70 (ANSI S62), 100 (ANSI S54), and 150 (ANSI S55) watts. Metal Halide in 100 (ANSI M90) watts.
<b>Ballast:</b>	Metal Halide (MH) for High Power Factor (HPF) 120/208/240/277V. High Pressure Sodium (HPS) for Normal Power Factor (NPF) 120V, HPF 120 and HPF 120/277V.
<b>Hardware:</b>	Four stainless-steel 8-32 phillips truss head screws or tamperproof screws (TORX® type) attach lens to base plate.

#### Exploded View

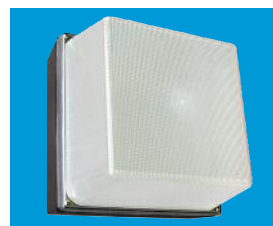


#### Dimensions

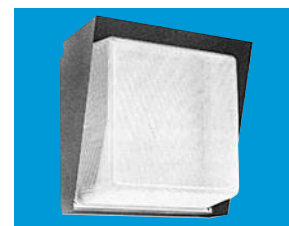


Side View of Lens/Housing

Back View of Housing



Wall Luminaire With Clear Prismatic Lens



Shown With Optional Decor Pack

ETL-US and ETL-C Listed For Wet Locations.

All polycarbonate components meet Underwriters Laboratories 746C tests for polymeric material and carry a flammability rating of 94HB or better on lenses and the superior 94-5V rating on housings.

Luminaire Type \_\_\_\_\_  
 Catalog Number \_\_\_\_\_  
 Job Name \_\_\_\_\_  
 Approval \_\_\_\_\_

## WF Harris Lighting

**Innovative Lighting Designs Since 1970**

P.O. Box 5023, Monroe, NC 28111-5023, USA  
 (704) 283-7477 (OPERATOR ASSIST) • (704) 283-6880 (FAX)

(800) 842-9345 (TOLL FREE)

e-mail: customerservice@wfarris.com  
 www.wfarrislighting.com

Form 1504 10/15

*"A Live Operator Company Standing Ready to Serve Your Lighting Needs"*

# HPS-METAL HALIDE

Ordering Information (Fill In Blanks For Complete Catalog Number)

1200	CP					
Model	Housing	Lens Color	Watts-Lamp	Power Factor/Volts	Options	Conduit Connections
1200	HB-Bronze HW-White	CP-Clear Prismatic	100 MH 50 HPS 70 HPS 100 HPS 150 HPS <sup>5</sup>	NPF 120 <sup>5</sup> HPF 120 <sup>4</sup> HPF120/277 <sup>3</sup> 120/208/240/277 <sup>2</sup>	PC-Photo Control <sup>1</sup> LP-Lamp QRS-Quartz Restrike System (120V) QRSLP-Quartz Restrike System With 100Q/DC Lamp (120V) QRSTS-Quartz Restrike System With Timed System (120V) QRSTS-LP-Quartz Restrike System With Timed System and 100 Q/DC Lamp (120V) TPS-Tamperproof Screws FS-Fuse and Holder	CRS-Right Side CLS-Left Side CT-Top CB-Bottom C4-All (Positions Based on Facing Fixture)

- <sup>1</sup> Specify Voltage - 120V or 277 V Only
- <sup>2</sup> Available for 100 MH
- <sup>3</sup> Available for 50 HPS
- <sup>4</sup> Available for 70 HPS or 100 HPS
- <sup>5</sup> Available for 150 HPS
- <sup>6</sup> Concrete or metal ceiling use only. Not for use on insulated ceilings.

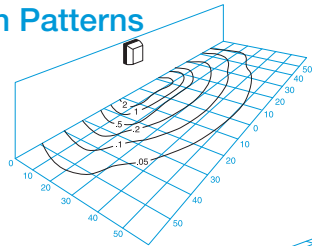
**Accessories** (Order Separately)   
TPT-Tamperproof Screwdriver

## Lamp Performance

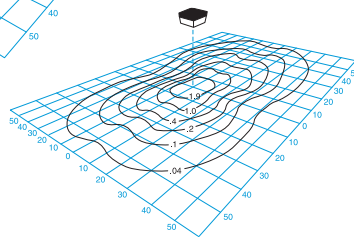
	100 Watt MH	50 Watt HPS	70 Watt HPS	100 Watt HPS	150 Watt HPS
Input Watts	129W	66W	91W	130W	188W
Lumen Output	8,800	4,000	6,300	9,500	16,000
Lamp Life (Hours)	10,000	24,000	24,000	24,000	24,000
Min. Starting Temperature	-20°F/-30°C	-40°F/-40°C	-40°F/-40°C	-40°F/-40°C	-40°F/-40°C

## Light Distribution Patterns

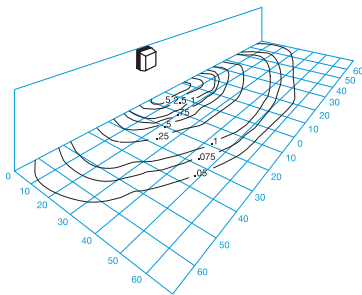
Model 1200-CP-100 MH  
Wall Mounted 10' M.H.  
Test Report No. 32723A



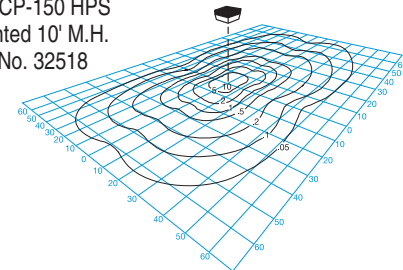
Model 1200-CP-100 MH  
Ceiling Mounted 10' M.H.  
Test Report No. 32726A



Model 1200-CP-150 HPS  
Wall Mounted 10' M.H.  
Test Report No. 30215



Model 1200-CP-150 HPS  
Ceiling Mounted 10' M.H.  
Test Report No. 32518



## Conversion Tables

Lamp	Lamp Conversion Factor	Mounting Height	Height Conversion Factor
100 MH	1.00	8'	1.56
150 HPS	1.00	9'	1.23
100 HPS	.59	10'	1.00
70 HPS	.36	11'	.83
50 HPS	.25	12'	.69
		14'	.51
		16'	.39

### Using Conversion Table

TO ADJUST FOOTCANDLES (FC) SHOWN IN DIAGRAMS AT LEFT, USE THE FOLLOWING FORMULA WITH LAMP CONVERSION FACTOR (LCF) AND HEIGHT CONVERSION FACTOR (HCF):

$$\begin{aligned} FC \times LCF &= FC \text{ with alternate lamp} \\ FC \times HCF &= FC \text{ at alternate height} \\ FC \times LCF \times HCF &= FC \text{ with alternate lamp at alternate height} \end{aligned}$$



Specifications Subject to Change Without Notice

Luminaire is Warranted to be Free of Defects in Materials and Workmanship for One Year From Invoice Date.

**LENS, HOUSING, AND ALUMINUM BASE PLATE CARRY A LIFETIME GUARANTEE.**



**Innovative Lighting Designs Since 1970**

P.O. Box 5023, Monroe, NC 28111-5023, USA

(704) 283-7477 (OPERATOR ASSIST) • (704) 283-6880 (FAX)

(800) 842-9345 (TOLL FREE)

e-mail: customerservice@wfarris.com

www.wfarrislighting.com

Printed in USA

Form 1504

10/15

*"W. F. Harris Lighting Will Not Sacrifice Quality for the Sake of Price."*