

# FLUORESCENT



## 30 Series *Rustproof Vandal-Resistant Wall/Ceiling Luminaire* 42 Watts Maximum

An energy-efficient compact luminaire that offers up to 42 watts of soft fluorescent lighting. **Rustproof.** Engineered for indoor or outdoor use with materials offering the **highest resistance to corrosion and impact.** A variety of lens styles in decorator colors and a choice of horizontal or vertical mountings make this luminaire extremely versatile for office buildings, schools, hotels and motels, apartments, government installations, and commercial establishments. **PLT Lamp 0°F minimum starting temperature.**



30-CP

### Specifications

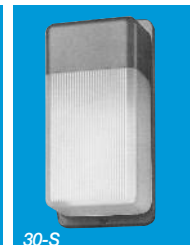
<b>Lens:</b>	Injection molded with prismatic interior of UV-stabilized <b>polycarbonate</b> in an average 1/8" thickness. Smooth exterior surface for ease of cleaning and rounded corners for added strength and safety. Selections include clear prismatic or opal white. Stylish single-end, double-end and horizontal painted lens in Black, White or Bronze. Suitable for graphic display of letters, symbols and numbers.
<b>Base Plate:</b>	<b>Rustproof</b> .063" 5052 H-32 tempered marine-grade aluminum.
<b>Housing: (optional)</b>	Injection molded UV-stabilized reinforced polycarbonate in Black, White or Bronze. Includes five knockouts suitable for 1/2" conduit (gasket included). PLT includes 30B Housing.
<b>Gasket:</b>	Closed-cell neoprene rubber in 1/8" thickness creates a tight seal against contaminants.
<b>Socket:</b>	Two-pin and four-pin type with leads insulated for 105°C.
<b>Lamp:</b>	High efficiency PL, PLT or GX7 lamp(s) included. Up to ten times longer life and 70% energy savings over incandescent lamps. <b>PLT 0°F minimum starting temperature.</b>
<b>Ballast:</b>	Self-start preheat type in Normal Power Factor for 120V or High Power Factor for 120-277V, electronic ballast. PLT standard electronic 0°F starting temperature and 50/60 Hz.
<b>Hardware:</b>	Two stainless steel 8-32 phillips truss head screws or tamperproof screws attach lens to base plate. Mounting hardware included.



30-HZ-S-CP with optional housing



30-OW



30-S



30-D-CP



30-NL-OW



30-OW with optional Graphics

ETL-US and ETL-C Listed – Wet Location

All polycarbonate components meet Underwriters Laboratories 746C tests for polymeric material and carry a flammability rating of 94HB or better on lenses and the superior 94-5V rating on housings.

Luminaire Type \_\_\_\_\_  
 Catalog Number \_\_\_\_\_  
 Job Name \_\_\_\_\_  
 Approval \_\_\_\_\_

## WF Harris Lighting

**Innovative Lighting Designs Since 1970**

P.O. Box 5023, Monroe, NC 28111-5023, USA  
 (704) 283-7477 (OPERATOR ASSIST) • (704) 283-6880 (FAX)  
 (800) 842-9345 (TOLL FREE)

e-mail: [customerservice@wfharris.com](mailto:customerservice@wfharris.com)  
[www.wfharrislighting.com](http://www.wfharrislighting.com)

Form 1510

12/15

*"A Live Operator Company Standing Ready to Serve Your Lighting Needs"*

# FLUORESCENT

Ordering Information (Fill In Blanks For Complete Catalog Number)

Model	Lens Color	Painted Lens Color	Housing Color	Watts/Lamp	Power Factor	Volts	Options
<b>Model</b>	<b>Lens Color</b>	<b>Painted Lens Color</b>	<b>Housing Color</b>	<b>Watts/Lamp</b>	<b>Power Factor</b>	<b>Volts</b>	<b>Options</b>
30 <sup>12</sup>	CP-Clear Prismatic	BK-Black	HK-Black	7 PL	NPF	120	TPS-Tamperproof Screws
30-S <sup>6,10</sup>	OW-Opal White	WH-White	HW-White	9 PL			30H <u>    </u> -Housing (Specify Color)
30-D <sup>6,8</sup>	A-Environmentally Friendly <sup>11</sup>	BZ-Bronze	HB-Bronze	13 PL			K-Black W-White B-Bronze
30-NL <sup>1,9</sup>				2-9 PL <sup>2</sup>			FS-Fuse and Holder
30-HZ-S <sup>6,7</sup>				1-13 GX7 <sup>2,4</sup>	HPF <sup>2</sup>	120-277	PC-120-Photo Control for 120V Ballast <sup>5</sup>
				2-13 GX7 <sup>2,4</sup>			PC-277-Photo Control for 277V Ballast <sup>5</sup>
				18 PLT <sup>*2,4</sup>			GCO-Grounded Convenience Outlet <sup>3,5</sup>
				26 PLT <sup>*2,4</sup>			SW/B-On/Off Switch with Boot <sup>3,5</sup>
				32 PLT <sup>*2,4</sup>			
				42 PLT <sup>*2,4</sup>			

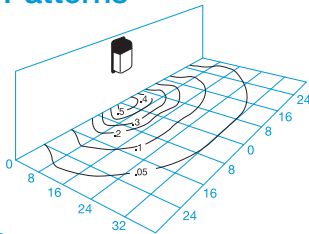
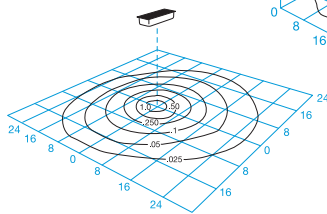
**Accessories** (Order Separately)  
 TPT-Tamperproof Screwdriver

1Specify up to four numbers or letters.  
 2Includes 30H housing.  
 3Dry locations only.  
 4HPF only.  
 5Requires 30H housing.  
 6Specify Painted Lens Color— BK (Black), WH (White), BZ (Bronze)  
 7Available only in 9PL, 2-9PL, or 26PLT  
 8Available only in 13PL  
 9Available only in 9PL, 13PL or 18PLT  
 10Not Available in 1-13GX7 or 2-13GX7

11Available only for Model 30-HZ-S with 13PL  
 12Not Available in 7PL  
 \*Electronic

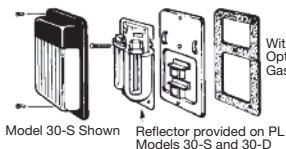
## Light Distribution Patterns

Model 30-S-CP-2-9 PL  
 Wall Mounted  
 Based On 8' M.H.

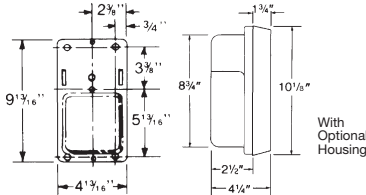


Model 30-CP-13 PL  
 Ceiling Mounted  
 Based On 8' M.H.

### Exploded View



### Dimensions



## Conversion Tables

Lamp	Lamp Conversion Factor		Mounting Height	Height Conversion Factor
	Wall Mount	Ceiling Mount		
2-9 PL	1.00	1.33	6'	1.77
13 PL	.75	1.00	7'	1.30
9 PL	.50	.67	9'	.79
7 PL	.33	.44	10'	.64
18 PLT	1.00	1.00		
26 PLT	1.50	1.50		
32 PLT	2.00	2.00		
42 PLT	2.67	2.67		

### Using Lamp Conversion Tables

TO ADJUST FOOTCANDLES (FC) SHOWN IN DIAGRAMS AT LEFT, USE ONE OF THE FOLLOWING FORMULAS WITH LAMP CONVERSION FACTOR (LCF) AND HEIGHT CONVERSION FACTOR (HCF):

- FC x LCF = FC with alternate lamp
- FC x HCF = FC at alternate height
- FC x LCF x HCF = FC with alternate lamp at alternate height

## Fluorescent Lamp Performance

	7 Watt Twin	9 Watt Twin	13 Watt Twin	(2) 9 Watt Twin	13 Watt GX7	(2) 13 Watt GX7	18 Watt PLT	26 Watt PLT	32 Watt PLT	42 Watt PLT
Input Watts	11W	11W	17W	22W	13W	26W	18W	26W	32W	42W
Lumen Output	400	600	900	1,200	900	900	1,200	1,800	2,400	3,200
Lamp Life (Hours)	10,000	10,000	10,000	10,000	10,000	10,000	10,000	10,000	10,000	10,000
Min. Starting Temp	0°F	25°F	32°F	25°F	0°F	0°F	0°F	0°F	0°F	0°F



Specifications Subject to Change Without Notice

Luminaire is Warranted to be Free of Defects in Materials and Workmanship for One Year From Invoice Date.

**LENS, HOUSING, AND ALUMINUM BASE PLATE CARRY A LIFETIME WARRANTY.**

**Innovative Lighting Designs Since 1970**

P.O. Box 5023, Monroe, NC 28111-5023, USA  
 (704) 283-7477 (OPERATOR ASSIST) • (704) 283-6880 (FAX)  
 (800) 842-9345 (TOLL FREE)

e-mail: customerservice@wfharris.com  
 www.wfharrislighting.com

Printed in USA

Form 1510

12/15

*"W. F. Harris Lighting Will Not Sacrifice Quality for the Sake of Price."*