

FLUORESCENT

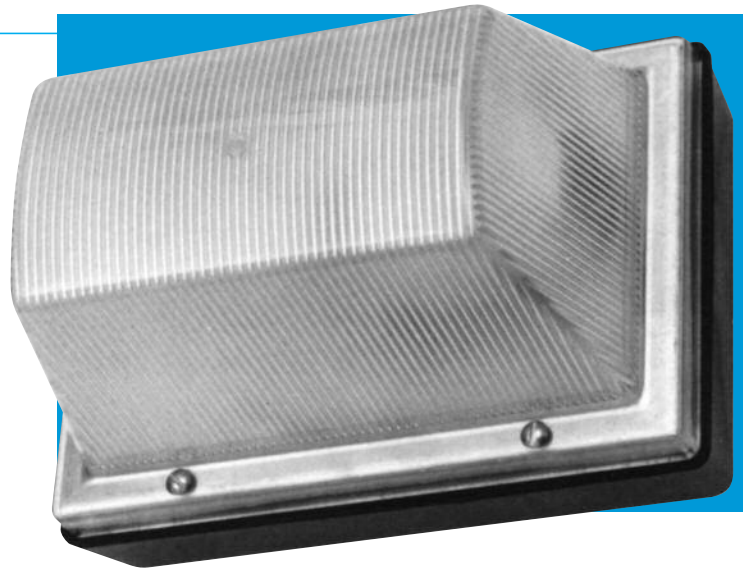


300-HZ Series *Rustproof Vandal-Resistant Wall Luminaire* 32 Watts Maximum

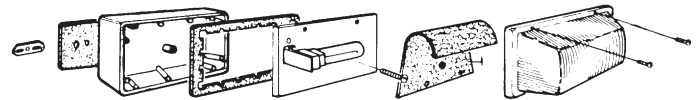
An integral reflector allows this version of our Model 300 to be wall mounted horizontally producing a downward, wide-light distribution pattern. Engineered with components and materials offering **high resistance to rust, corrosion, and impact**. The housing is totally nonconductive, insuring more safety to the end user. Ideally suited to illuminate building walls and perimeters, landscaping, corridors, traffic areas and entryways.

Specifications

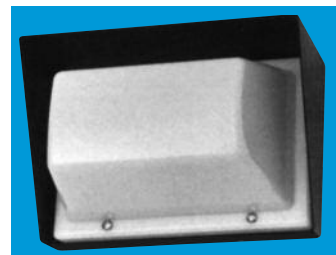
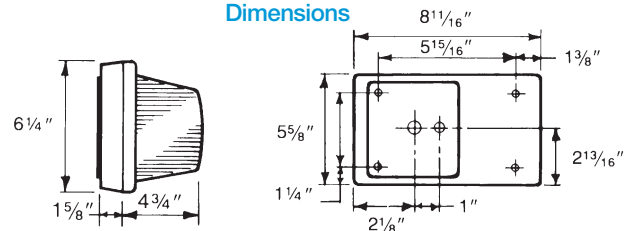
Lens:	Injection molded of UV-stabilized polycarbonate. Average thickness is 1/8". Smooth exterior surface for ease of cleaning.
Base Plate:	Rustproof .080" 5052 H-32 tempered marine-grade aluminum.
Housing:	Injection molded in black, white, or bronze UV-stabilized, reinforced polycarbonate is included. Rear knockout for supply wire. Available with up to four threaded connections and plugs suitable for 1/2" conduit.
Reflector:	Formed of anodized aluminum projecting 77.7% total reflectivity.
Gasket:	Closed-cell neoprene rubber in 1/8" thickness creates a tight seal against moisture and contaminants.
Socket:	Four-pin and two-pin type. Leads insulated for 105°C.
Lamp:	High-efficiency PL tube, quad tube, and PLT lamps offer up to ten times longer life and 70% energy savings over comparable incandescent lamps.
Ballast:	Self-start preheat type in Normal Power Factor 120V or High Power Factor for 120-277 volts. Optional Cold Weather (0°F) Ballast.
Hardware:	Four stainless steel 8-32 phillips screws or tamperproof screws attach lens to base plate. Mounting hardware provided.
Mounting:	Must be mounted horizontally on the wall.



Exploded View



Dimensions



Shown With Optional Decor Pack

ETL-US and ETL-C Listed For Wet Locations.

All polycarbonate components meet Underwriters Laboratories 746C tests for polymeric material and carry a flammability rating of 94HB or better on lenses and the superior 94-5V rating on housings.

Luminaire Type _____
 Catalog Number _____
 Job Name _____
 Approval _____

WF Harris Lighting

Innovative Lighting Designs Since 1970

P.O. Box 5023, Monroe, NC 28111-5023, USA
 (704) 283-7477 (OPERATOR ASSIST) • (704) 283-6880 (FAX)
 (800) 842-9345 (TOLL FREE)

e-mail: customerservice@wfarris.com
 www.wfarrislighting.com

Form 1524 12/15

"A Live Operator Company Standing Ready to Serve Your Lighting Needs"

FLUORESCENT

Ordering Information (Fill In Blanks For Complete Catalog Number)

Model	Lens Color	Painted Lens Color	Housing Color	Watts/Lamp	Power Factor	Volts	Options	Conduit Connections
Model	Lens Color	Painted Lens Color	Housing Color	Watts/Lamp	Power Factor	Volts	Options	Conduit Connections
300-HZ	CP-Clear Prismatic	BK-Black ⁵	HK-Black ⁶	7 PL	NPF	120-277	PC-Photo Control	CRS-Right Side
300-HZ-S ⁵	OW-Opal White ³	WH-White ⁵	HW-White ⁶	9 PL	HPF		TPS-Tamperproof Screws	CLS-Left Side
	BZ-Bronze ⁴	BZ-Bronze ⁵	HZ-Bronze ⁶	13 QD			CW-0°F Ballast ³	CT-Top
	BY-Buglight Yellow ⁴			32 PLT ^{*1}			GCO-Grounded Convenience Outlet ²	CB-Bottom
	A-Amber ⁴						SW/B-On/Off Switch with Boot ²	C4-All Four Sides
	G-Green ⁴						HDPK-Black Aluminum Decor Pack	Positions Based on Facing Luminaire
	B-Blue ⁴ (For Law Enforcement Use Only. Documentation Required.)						HDPB-Bronze Aluminum Decor Pack	
							FS-Fuse and Holder	
							P-Class P Ballast for Indoor Use	

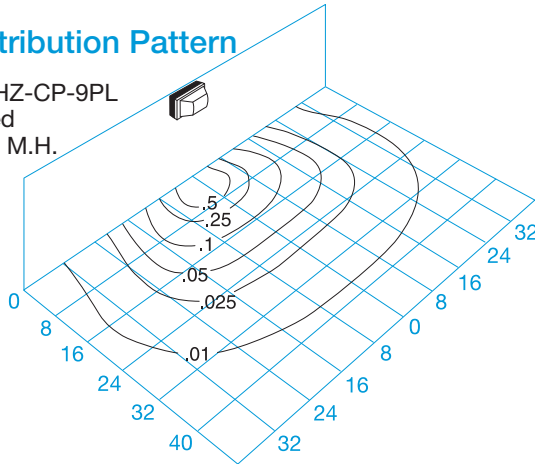
Accessories (Order Separately)

TPT-Tamperproof Screwdriver 

- *Electronic
- 1HPF only
- 2Dry Locations Only
- 3Consult Factory for Availability and Price
- 4Not Available in Model 300-HZ-S
- 5Specify Painted Lens Color.
- 6Housing Color Based on Painted Lens Color.

Light Distribution Pattern

Model 300-HZ-CP-9PL
Wall Mounted
Based On 8' M.H.



Conversion Table

Lamp	Lamp Conversion Factor	Mounting Height	Height Conversion Factor
13 QD	1.43	6'	1.77
9 PL	1.00	8'	1.00
7 PL	0.67	10'	0.64
32 PLT	4.00		

Using Conversion Table

TO ADJUST THE FOOTCANDLES (FC) SHOWN IN DIAGRAM AT LEFT, USE ONE OF THE FOLLOWING FORMULAS WITH LAMP CONVERSION FACTOR (LCF) AND HEIGHT CONVERSION FACTOR (HCF):

$$FC \times LCF = FC \text{ with alternate lamp}$$

$$FC \times HCF = FC \text{ at alternate height}$$

$$FC \times LCF \times HCF = FC \text{ with alternate lamp at alternate height}$$

Fluorescent Lamp Performance

	7 Watt Twin Tube	9 Watt Twin Tube	13 Watt Quad Tube	32 Watt Triple Tube
Input Watts	11W	13W	17W	32W
Lumen Output	400	600	860	2,400
Lamp Life (Hours)	10,000	10,000	10,000	10,000
Min. Starting Temperature	0°F	25°F	32°F	0°F

Specifications Subject to Change Without Notice

Luminaire is Warranted to be Free of Defects in Materials and Workmanship for One Year From Invoice Date.

LENS, HOUSING, AND ALUMINUM BASE PLATE CARRY A LIFETIME GUARANTEE.



Innovative Lighting Designs Since 1970

P.O. Box 5023, Monroe, NC 28111-5023, USA
(704) 283-7477 (OPERATOR ASSIST) • (704) 283-6880 (FAX)
(800) 842-9345 (TOLL FREE)

e-mail: customerservice@wfharris.com
www.wfharrislighting.com

Printed in USA

Form 1524

12/15

"W. F. Harris Lighting Will Not Sacrifice Quality for the Sake of Price."