

ENERGY EFFICIENT LED WALLPACK

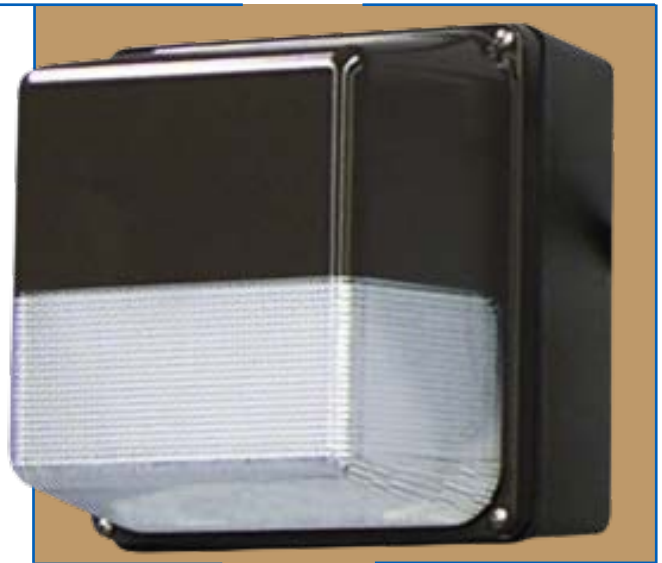
Model 80-WP-LED-2K4 *Rust Resistant • Wet Location Listed Vandal Resistant • Nonconductive*



Energy saving, energy efficient indoor/outdoor wallpack luminaire where style is as important as endurance, dependability and reduced operating costs. **Engineered with materials offering high resistance to rust, corrosion and impact.** The polycarbonate housing is nonconductive, assuring more safety to the end user. Smooth exterior polycarbonate lens trimmed in bronze high-temperature, weather-resistant polyurethane paint allows ease of cleaning; frosted clear interior assures high lumen output; and rounded corners provide increased impact strength and user safety. Ideally suited in applications for building interiors and exteriors, walkways, walls in grocery stores, hospitals, schools, universities, military installations and government establishments. Luminaire utilizes high quality LEDs and Driver to further enhance reliability and durability while reducing power consumption.

LEDs contain no mercury and emit no ultraviolet light.

LEDs will not break, unlike conventional lamps, if luminaire is dropped.



Specifications

Lens: Injection molded frosted clear lens of UV-stabilized polycarbonate trimmed in white or bronze high-temperature, weather-resistant polyurethane paint. Average thickness is .125". Frosted Clear lens interior provides optimal light output and diffusion; smooth exterior surface allows ease of cleaning; rounded corners increase impact strength and user safety.

Base Plate: Rust resistant .063" 5052 H-32 tempered marine-grade aluminum.

Housing: Injection molded of UV-stabilized reinforced white or bronze polycarbonate. Rear knockout for supply wire. Available with up to four threaded connections and plugs suitable for .50" conduit (specify conduit connections).

Gasket: Lens gasket and mounting gasket are closed-cell neoprene rubber.

LEDs: High Quality Lighting Grade LEDs
5,000K Color Temperature.
Net Lumens = 2424
Warranted for five (5) years.

LED Life: Lumen Maintenance (TM-21-11 70% Projection)
410,000 Hrs (25°C/77°F) = **47 Years of 24/7 LED life**
155,000 Hrs (50°C/122°F) = **18 Years of 24/7 LED life**
Calculations based on US Department of Energy Standards.
DOE TM-21-11, 70%.

ETL-US and ETL-C Listed for Wet Location Applications
(UL1598 for Non-Emergency Operation)
LM-79 and LM-80 Test Data Available

All polycarbonate components meet Underwriters Laboratories 746C tests for polymeric material and carry a flammability rating of 94HB or better on lenses and the superior 94-5V rating on housings.

Luminaire Type _____
Catalog Number _____
Product Code _____
Job Name _____
Approval _____

Driver: High Quality Driver
Class 2 Power Supply.
AC Input 120-277V, 50/60Hz.
Power = 21.5 W Efficacy = 121 Lm/W



Complies with FCC rules and regulations, as per Title 47 CFR Part 15 Non-Consumer (Class A) for EMI/RFI (conducted and radiated) at full load.
Warranted for five (5) years.

Hardware: Four stainless steel 8-32x3/8 phillips truss head screws or tamperproof screws attach lens to base plate. Four zinc-plated steel 1/4-15x3/4 phillips pan head screws attach base plate to housing.



**SBA QUALIFIED
SMALL BUSINESS MANUFACTURER**



W_FHarris Lighting, Inc.™

Innovative Lighting Designs Since 1970

P.O. Box 5023, Monroe, NC 28111-5023, USA
704.283.7477 (HEADQUARTERS) • 800.842.9345 (TOLL FREE)
e-mail: customerservice@wfharris.com
www.wfharrislighting.com

Form 2519-11A1

"A Live Operator Company Standing Ready to Serve Your Lighting Needs."

ENERGY EFFICIENT LED WALLPACK

Ordering Information

Fill In Blocks For Complete Catalog Number

80-WP-LED-2K4	—		—	
Model		Housing and Painted Lens Color		Options

HW - White³
HB - Bronze³

PC - Photo Control
CRS - Conduit Connection Right Side^{1,2}
CLS - Conduit Connection Left Side^{1,2}
CT - Conduit Connection Top^{1,2}
CB - Conduit Connection Bottom^{1,2}
C4 - Conduit Connections All 4 Sides^{1,2}
TPS - Tamperproof Screws (4)²

Accessories

(Order Separately)
TPT-Tamperproof
Screwdriver

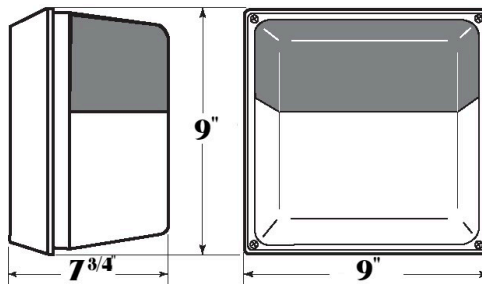


¹ Positions based on Facing Luminaire.

² Additional Charge.

³ Frosted Clear Lens painted with high temperature, weather-resistant polyurethane paint.

Dimensions



Weight

80-WP-LED-2K4 = 4.3 lbs.

LEDs and the W. F. Harris Lighting Advantage

The lighting grade LEDs used by W. F. Harris Lighting provide the long sought-after stability demanded for commercial illumination in brightness, efficacy, life time, and color temperatures. Can be used in commercial/industrial illumination applications, hospitals, schools, universities, government buildings, military installations and freezer applications.

W. F. Harris Lighting LED-based luminaires reduce ownership costs through five factors —

- (1) Maintenance avoidance – LEDs last much longer than traditional lamps plus the luminaire is rust resistant and vandal resistant.
- (2) Reduced energy cost of the LEDs.
- (3) Reduced cost in operation of freezer compressors due to lower wattage and less heat.
- (4) LEDs will not break, unlike conventional lamps, if luminaire is dropped.
- (5) LEDs contain no mercury and emit no ultraviolet light.

These lighting grade LEDs offer efficient illumination that - depending on the application - can last up to 410,000 hours before their light output falls below 70% of original illumination and even longer in refrigerated environments.



**SBA QUALIFIED
SMALL BUSINESS MANUFACTURER**



**LENS AND HOUSING CARRY A LIFETIME
GUARANTEE AGAINST BREAKAGE.**

Specifications Subject to Change Without Notice.

W.F. Harris Lighting, Inc.™

Innovative Lighting Designs Since 1970

P.O. Box 5023, Monroe, NC 28111-5023, USA

704.283.7477 (HEADQUARTERS) • 800.842.9345 (TOLL FREE)

e-mail: customerservice@wfharris.com

www.wfharrislighting.com

© 2019 W. F. Harris Lighting, Inc.

Printed in USA

Form 2519-11AI

“W. F. Harris Lighting Will Not Sacrifice Quality for the Sake of Price.”