

# LED WALL PACK LUMINAIRE

## NON-EMERGENCY and EMERGENCY UNITS



### Model 1200-WP-LED-5K-ST Model 1200-WP-LED-5K-LT

RUSTPROOF  
VANDAL RESISTANT  
NON-CONDUCTIVE

Vandal resistant, non-conductive LED wall packs provide efficient, effective, and safe illumination. Non-emergency and emergency versions (EM units) of the product are available and allow continuity of aesthetics in multiple luminaire installations, eliminating the need for separate emergency-only units. Emergency mode in the EM luminaire automatically engages on an interruption of power and recharges upon power restoration.

Not only do both units meet the challenging issues of indoor/outdoor (Wet Location) applications, but also the EM unit in emergency mode exceeds UL924 illumination requirements. It provides approximately 40% illumination for greater than the industry standard 90-minute duration (in excess of 2 hours with new battery) all while maintaining the same photometric pattern of the unit in AC mode.

**Polycarbonate** lens and housing are non-conductive and self-extinguishing to assure more safety to the end user. In ambient temperatures, the non-emergency unit operates between -40°C (-40°F) and 40°C (104°F) and the emergency unit operates between 10°C (50°F) and 40°C (104°F). The luminaire utilizes high quality LEDs and Driver to further enhance reliability and durability while reducing power consumption.

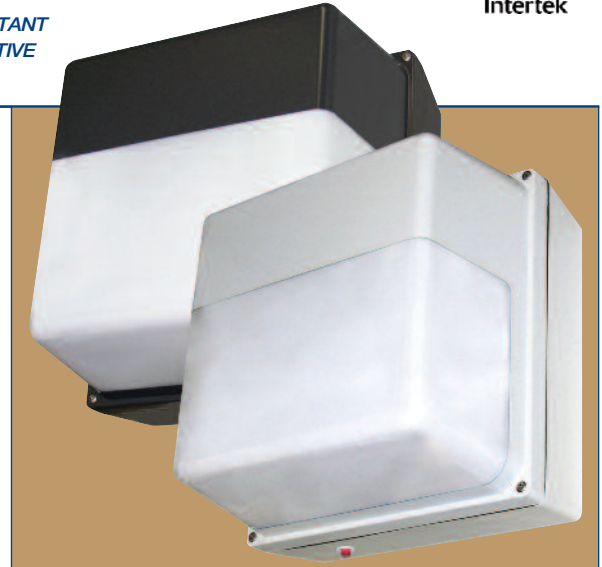
These luminaires are ideal for normal and challenging locations requiring rugged, corrosion-resistant, brilliant and dependable lighting sources like in coastal areas, schools and universities, military and office buildings, hotels and motels, apartments and condominiums, government installations, and other areas needing highly vandal resistant and reliable illumination.

**LEDs contain no mercury and emit no ultraviolet light.**

**LEDs will not break, unlike conventional lamps, if luminaire is dropped.**

### Specifications

<b>Lens:</b>	Injection molded UV-stabilized frosted clear <b>polycarbonate</b> in an average thickness of .125". Diffused lumen output. Trim choice of white or bronze high-temperature, weather-resistant polyurethane paint. Smooth exterior surface allows ease of cleaning and rounded corners increase impact strength and user safety.
<b>Base Plate:</b>	<b>Rustproof</b> . .080" 5052 H-32 tempered marine-grade aluminum.
<b>Housing:</b>	Injection molded UV-stabilized reinforced <b>polycarbonate</b> . Available in white or bronze molded-in color. Rounded corners increase impact strength and user safety. Five (5) conduit port locations with optional .50" factory drilled tap and plug. Specify location(s).
<b>Gasket:</b>	Closed-cell neoprene rubber in .125" thickness creates a tight seal against contaminants.
<b>LEDs:</b>	<b>High Quality Lighting Grade White LEDs</b> <b>Short-Throw or Long-Throw Illumination Choice</b> 5,000K Color Temperature. <b>Non-Emergency Mode Net Lumens = 5000    Power = 45 W    Efficacy = 111 Lm/W</b> <b>Emergency Mode Net Lumens = 1700        Power = 49 W</b> <b>Warranted for five (5) years.</b>
<b>LED Life:</b>	<b>Lumen Maintenance</b> (TM-21-11 70% Projection) <b>305,000 Hrs</b> (25°C/77°F) = <b>34 years of 24/7 LED life</b> <b>110,000 Hrs</b> (50°C/122°F) = <b>13 years of 24/7 LED life</b> <b>Calculations Based on US Department of Energy Worksheet</b> <b>DOE TM-21-11, 70%</b>



*Non-emergency and emergency versions allow continuity of aesthetics in multiple luminaire installations.*

**Driver:** High Quality Driver  
Class 2 Power Supply. AC Input: 120-277V, 60 Hz.



Complies with FCC rules and regulations, as per Title 47 CFR Part 15 Non-Consumer (Class A) for EMI/RFI (conducted and radiated) at full load.

**Warranted by Driver manufacturer for five (5) years.**

**Emergency Battery Pack:** Lithium Iron Phosphate battery is maintenance free with a life expectancy of 7-10 years and over 90 minutes of emergency lighting. Exterior indicator light reveals that battery is charging during normal operation. During a power interruption, the unit automatically switches to emergency mode. When AC power is restored, the battery is recharged (within 48 hours maximum for a fully discharged battery). Battery Pack is manufacturer warranted for five (5) years and is field replaceable.

**Hardware:** Four (4) stainless-steel 8-32x3/8 phillips truss head screws or optional tamperproof screws attach lens to base plate. Four (4) zinc-plated steel 1/4-15x3/4 phillips pan head screws attach base plate to housing. Mounting hardware included.

ETL-US and ETL-C Listed for Wet Location Applications  
(UL1598 for Non-Emergency Operation. UL924 for Emergency Operation.)  
LM-79 and LM-80 Test Data Available

All polycarbonate components meet Underwriters Laboratories 746C tests for polymeric material and carry a flammability rating of 94HB or better on lenses and the superior 94-5V rating on housings.

Luminaire Type \_\_\_\_\_  
Catalog Number \_\_\_\_\_  
Product Code \_\_\_\_\_  
Job Name \_\_\_\_\_  
Approval \_\_\_\_\_



**SBA QUALIFIED  
SMALL BUSINESS MANUFACTURER**

**TAA COMPLIANT**  
TRADE AGREEMENT ACT COMPLIANT

**WF Harris Lighting, Inc.**

**Innovative Lighting Designs Since 1970**  
P.O. Box 5023, Monroe, NC 28111-5023, USA  
704.283.7477 (HEADQUARTERS) • 800.842.9345 (TOLL FREE)  
e-mail: customerservice@wfharris.com  
www.wfharrislighting.com

Form 2532 5/17

*"A Live Operator Company Standing Ready to Serve Your Lighting Needs."*

# LED WALL PACK LUMINAIRE

## Ordering Information

Fill In Blocks For Complete Catalog Number

<b>Model</b>	<b>Housing/Painted Lens Color</b>	<b>Operation</b>	<b>Options</b>

**1200-WP-LED-5K-ST** - Luminaire with Short Throw 45° Downward Angle from Vertical Light Angle

**1200-WP-LED-5K-LT** - Luminaire with Long Throw 30° Downward Angle from Vertical Light Angle

**HW** - White Housing and Painted Lens Color<sup>4</sup>

**HB** - Bronze Housing and Painted Lens Color<sup>4</sup>

**EM** - Emergency  
For ordering non-emergency operation, please leave blank.

**CRS** - Conduit Connection Right Side<sup>1,2</sup>  
**CLS** - Conduit Connection Left Side<sup>1,2</sup>  
**CT** - Conduit Connection Top<sup>1,2</sup>  
**CB** - Conduit Connection Bottom<sup>1,2</sup>  
**C4** - Conduit Connections All 4 Sides<sup>1,2</sup>  
**TPS** - Tamperproof Screws (4)<sup>3</sup>

<sup>1</sup> Positions based on facing luminaire.

<sup>2</sup> Additional charges may apply. Consult factory.

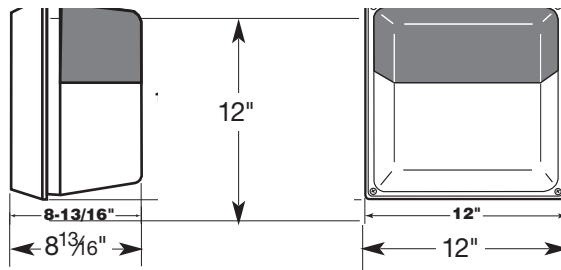
<sup>3</sup> No additional charge when specified with initial order.

<sup>4</sup> Frosted Clear Lens painted with high temperature, weather-resistant polyurethane paint.

**Accessories** (Order Separately)  
Tamperproof Screwdriver



## Dimensions



## LEDs and the W. F. Harris Lighting Advantage

The lighting grade LEDs used by W. F. Harris Lighting provide the long sought-after stability demanded for commercial illumination in brightness, efficacy, life time, and color temperatures. Can be used in commercial/industrial illumination applications, hospitals, schools, universities, government buildings, military installations and freezer applications.

W. F. Harris Lighting LED-based luminaires reduce ownership costs through four factors —

- (1) Maintenance avoidance – LEDs last much longer than traditional lamps plus the luminaire is non-rusting and vandal resistant.
- (2) Reduced energy cost of the LEDs.
- (3) Reduced cost in operation of freezer compressors due to lower wattage and less heat.
- (4) LEDs will not break, unlike conventional lamps, if luminaire is dropped.
- (5) LEDs contain no mercury and emit no ultraviolet light.

These lighting grade LEDs offer efficient illumination that - depending on the application - can last up to 100,000 hours before their light output falls below 70% of original illumination and even longer in refrigerated environments.

## Application-specific units available to meet a customer's unique lighting requirements.

After the customer provides W. F. Harris Lighting with specific requirements for a lighting application, our in-house LED Application Engineering Department will adjust the luminaire to satisfy those requirements. Once completed, a Product Code will be assigned and used to order application-specific units.



**SBA QUALIFIED  
SMALL BUSINESS MANUFACTURER**

**TAA COMPLIANT**  
TRADE AGREEMENT ACT COMPLIANT

**W.F. Harris Lighting, Inc.**

**Innovative Lighting Designs Since 1970**

P.O. Box 5023, Monroe, NC 28111-5023, USA

704.283.7477 (HEADQUARTERS) • 800.842.9345 (TOLL FREE)

e-mail: customerservice@wfarris.com

www.wfharrislighting.com

**LENS AND HOUSING CARRY A  
LIFETIME GUARANTEE AGAINST BREAKAGE.**

Specifications Subject to Change Without Notice.

Printed in USA

Form 2532 5/17

*"W. F. Harris Lighting Will Not Sacrifice Quality for the Sake of Price."*