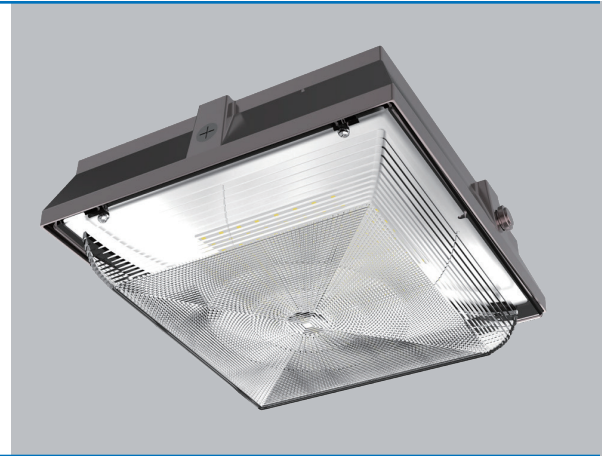


# OUTDOOR ENTRY LIGHT

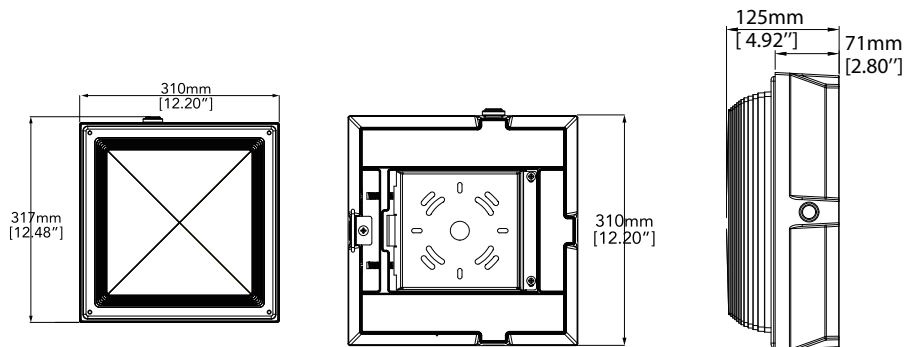
## CANOPY MODEL: E5050



- Impact and weather resistant fixture with die cast back housing and polycarbonate Prismatic lenses.
- Universal mounting plate with easy hook mechanism for hands free installation.
- Bronze housing finish as stock, special order colors available(white, silver,gray and black). Call for more information.
- Capable for conduit wiring application.
- Name brand chip and driver @ 5 year warranty



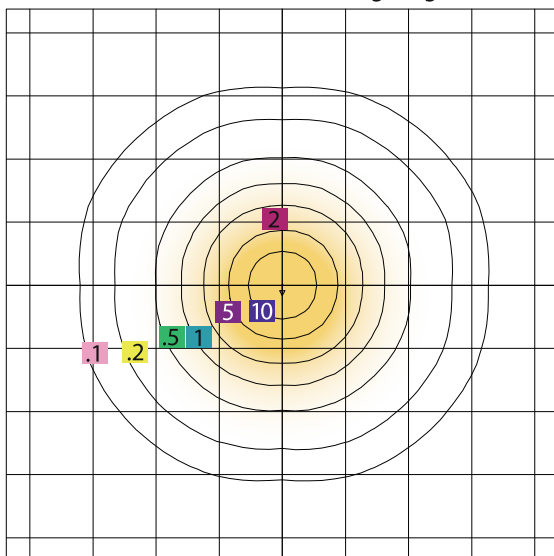
### Dimensions



### PHOTOMETRY

#### E5050

Mounting Height=12.00 FT



SCALE: 1 INCH = 15 FT. LIGHT LOSS FACTOR = 1.00  
 MAXIMUM CALCULATED VALUE = 16.22 FC  
 FOOT CANDLE = .1 .2 .5 1 2 5 10

### Specifications

- Lumens (LM): 5300LM
- Efficacy (LPW): UP TO 106LPW
- Input Voltage: 120-277V
- CRI: > 70
- Equivalency (W): 150W MH
- Operating Temp: -30 - 40°C
- Warranty: 5 Years

## WF Harris Lighting, Inc.

Innovative Lighting Designs Since 1970

4015 Airport Ext. Road • Monroe, NC 28110 USA  
 704.283.7477 (Headquarters) • 800.842.9345 (Toll Free)

E-Mail: [customerservice@wfharris.com](mailto:customerservice@wfharris.com)

[www.wfharrislighting.com](http://www.wfharrislighting.com)