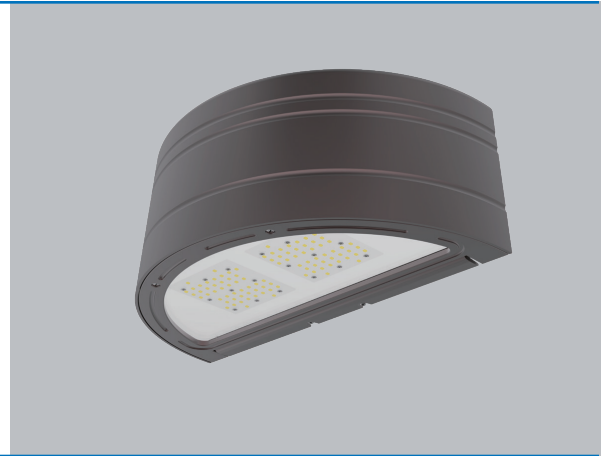


OUTDOOR ENTRY LIGHT

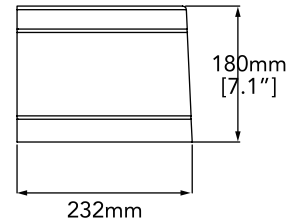
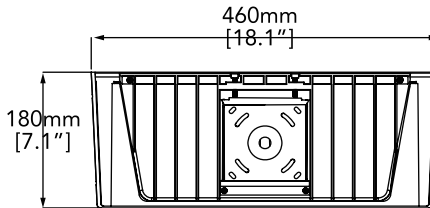
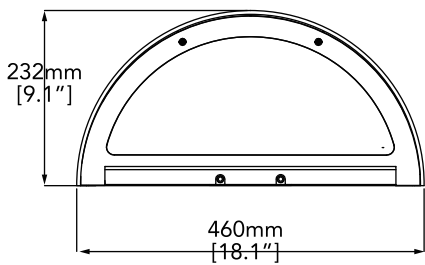
WALL LIGHT MODEL: E630



- Traditional Impact & weather resistant fixture with die cast aluminum housings and glass lenses.
- 30W/60W/80W field adjustable and 3000K/4000K/5000K field adjustable.
- Universal mounting plate with easy wall mount installation.
- 0-10V dimming as standard.
- Photocell included with optional photocell cover.
- Name brand chip and high quality driver@ 5 year.



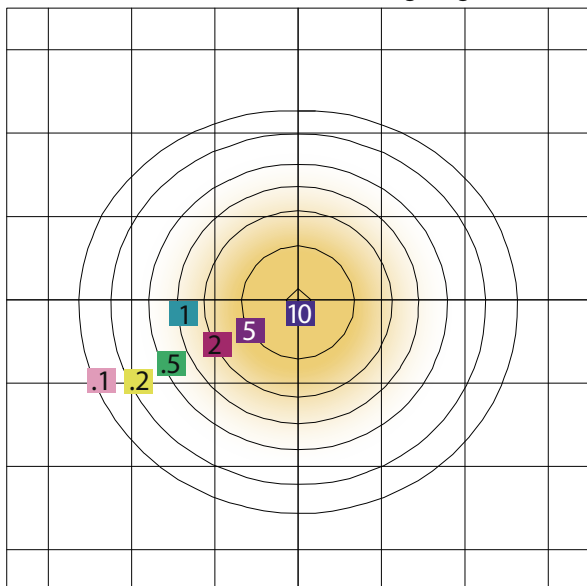
Dimensions



PHOTOMETRY

E630

Mounting Height=15.00 FT



SCALE: 1 INCH = 15 FT. MAXIMUM CALCULATED VALUE = 10.64 FC
 LIGHT LOSS FACTOR = 1.00 FOOT CANDLE = .1 .2 .5 1 2 5 10

Specifications

- Lumens (LM): 10000LM
- Efficacy (LPW): UP TO 125LPW
- Input Voltage: 120-277V
- CRI: > 70
- Equivalency (W): 400W MH
- Operating Temp: -30 - 40°C
- Warranty: 5 Years

WF Harris Lighting, Inc.

Innovative Lighting Designs Since 1970

4015 Airport Ext. Road • Monroe, NC 28110 USA
 704.283.7477 (Headquarters) • 800.842.9345 (Toll Free)

E-Mail: customerservice@wfharris.com

www.wfharrislighting.com