

# OUTDOOR ENTRY LIGHT

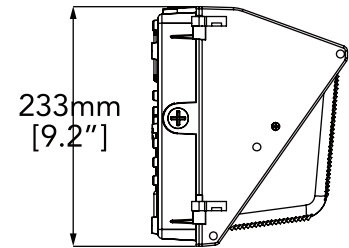
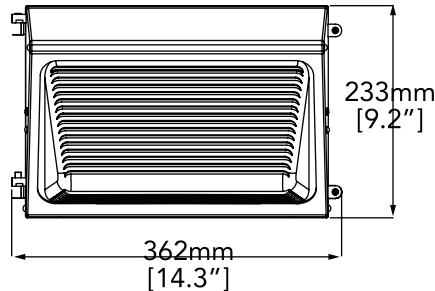
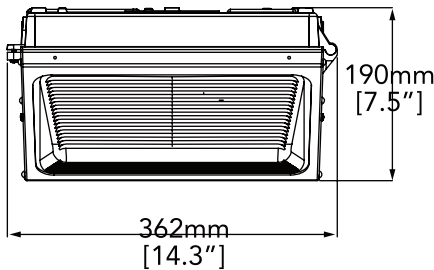
## WALL LIGHT MODEL: E4080



- Traditional Impact & weather resistant fixture with die cast aluminum housings and glare free prismatic glass lenses.
- Universal mounting plate with hinge hooks for easy hands free installation.
- 30W/60W/80W field adjustable and 3000K/4000K/5000K field adjustable.
- 0-10V dimming
- Photocell included with optional photocell cover.
- Bronze housing finish as stock, special order colors available (white, silver, gray and black). Call for more information.
- Brand name chip and driver @ 5 year warranty.

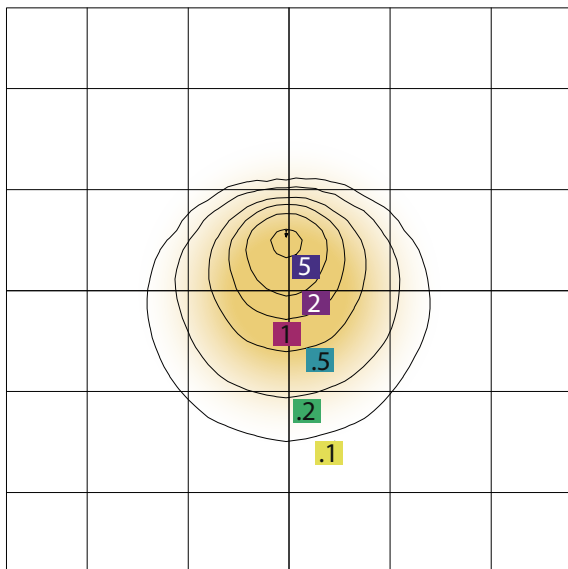


### Dimensions



### PHOTOMETRY

**E4080**  
MOUNTING HEIGHT=15.00 FT



SCALE: 1 INCH = 25 FT.      MAXIMUM CALCULATED VALUE = 6.16 FC  
 LIGHT LOSS FACTOR = 1.00      FOOT CANDLE = .1 .2 .5 1 2 5

### Specifications

- Lumens (LM): 10400LM
- Efficacy (LPW): UP TO 130LPW
- Input Voltage: 120-277V
- CRI: > 70
- Equivalency (W): 400W MH
- Operating Temp: -30 - 40°C
- Warranty: 5 Years

# WF Harris Lighting, Inc.

Innovative Lighting Designs Since 1970

4015 Airport Ext. Road • Monroe, NC 28110 USA  
 704.283.7477 (Headquarters) • 800.842.9345 (Toll Free)

E-Mail: [customerservice@wfharris.com](mailto:customerservice@wfharris.com)

[www.wfharrislighting.com](http://www.wfharrislighting.com)