

OUTDOOR ENTRY LIGHT

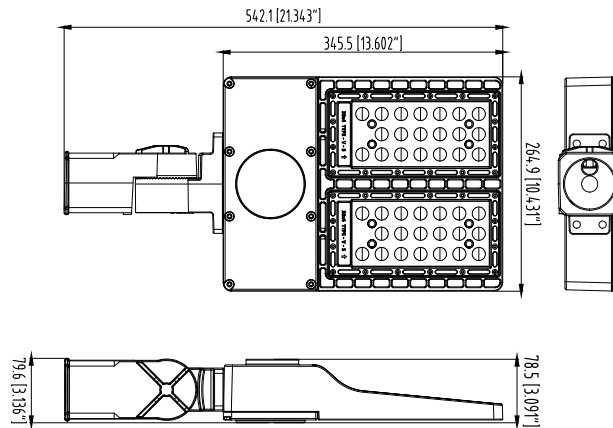
AREA LIGHT MODEL: E940



- Industrial grade area light family with multiple mounting configurations for maximum application versatility. Slip Fitter as stock, other mounting arms available for special order. Call for more information.
- Impact & weather resistant fixture with die cast aluminium housings and polycarbonate T3 Optic lenses.
- 3 pin Photocell Receptacle and Photocell as standard.
- 0-10V dimming as standard.
- Bronze housing finish as stock, special order colors available (white, silver, gray and black). Call for more information.
- Name brand chip and high quality driver @ 5 year.

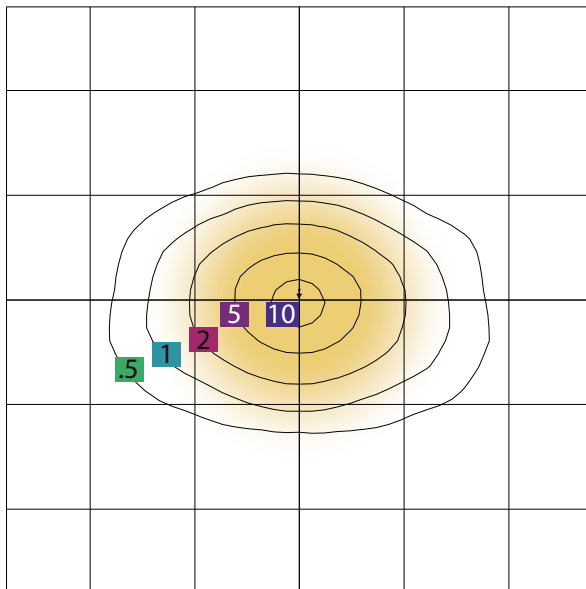


Dimensions



PHOTOMETRY

E940
Mounting Height=15.00 FT



SCALE: 1 INCH = 20 FT.
LIGHT LOSS FACTOR = 1.00

MAXIMUM CALCULATED VALUE = 12.5FC
FOOT CANDLE = .5 1 2 5 10

Specifications

- Lumens (LM): 21000LM
- Efficacy (LPW): UP TO 140LPW
- Input Voltage: 120-277V
- CRI: > 70
- Equivalency (W): 800W MH
- Operating Temp: -30 - 40°C
- Warranty: 5 Years

WF Harris Lighting, Inc.

Innovative Lighting Designs Since 1970

4015 Airport Ext. Road • Monroe, NC 28110 USA
704.283.7477 (Headquarters) • 800.842.9345 (Toll Free)

E-Mail: customerservice@wfharris.com

www.wfharrislighting.com